

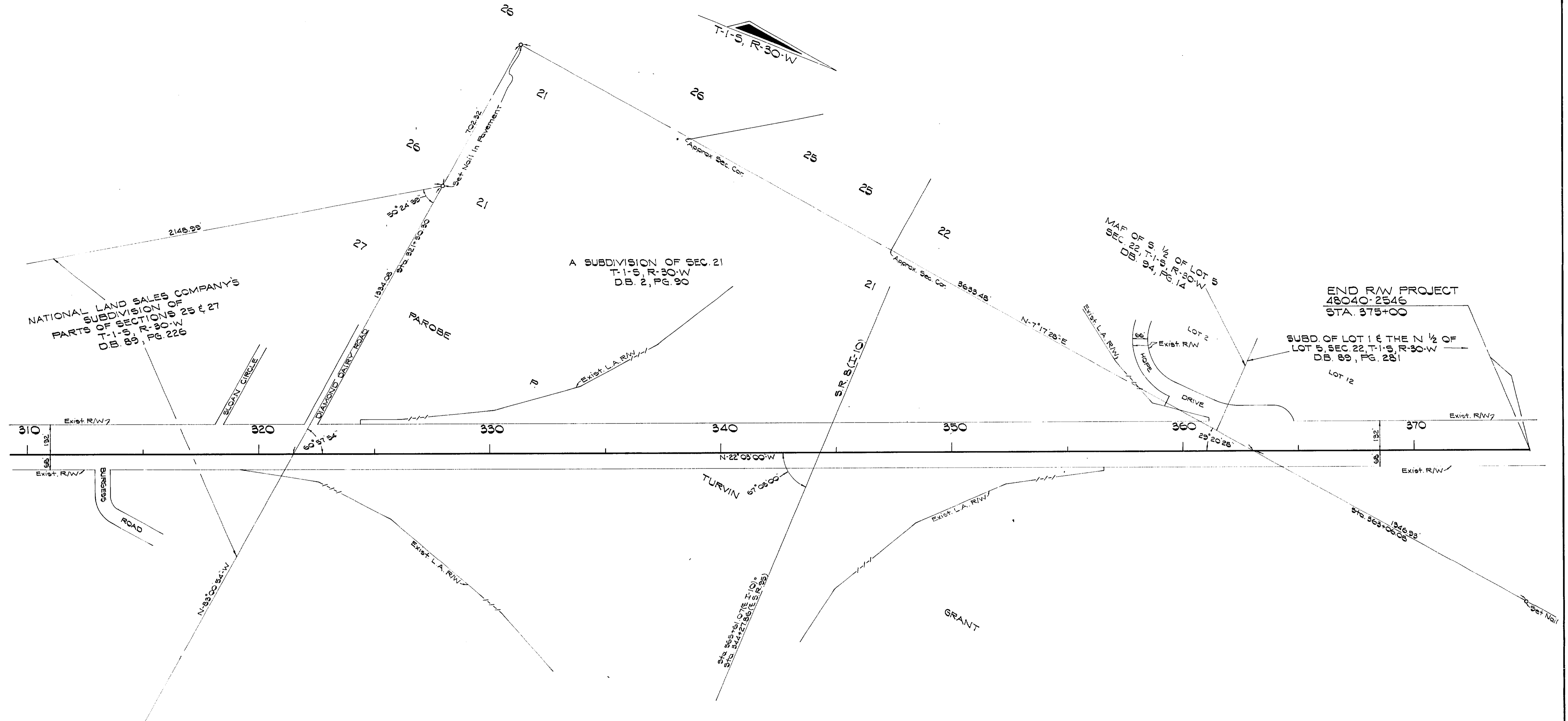




8  
9  
2546  
48040

AF 45552C

F.A. PROJECT NO.	SHEET NO.
N/A	



KEY MAP

FLORIDA DEPARTMENT OF TRANSPORTATION RIGHT OF WAY SURVEYING AND MAPPING			
<b>RIGHT OF WAY MAP</b>			
STATE ROAD NO. 95		ESCAMBIA COUNTY	
BY	DATE	APPROVED BY	DATE
DRAWN: CARTER	5-6-88	Russell H. Hood	6-10-88
TRACED: CARTER	5-6-88	DIST. SURVEYOR ADM.	
CHECKED: J. BUSH	5-24-88		
MAPS PREPARED BY 3RD DISTRICT		FIELD BOOK NO'S SEE SHEET 1	
W.P.I. NO. 311179		SCALE 1"=200'	
REV. SHEET No.	BY	DATE	SECTION 48040-2546 SHEET 3 OF 8

S.R. 95 (U.S. 29) FROM S.R. 296 (BRENT LANE TO S.R. 8 (I-10))

Curve No.	T.B. Back	Delta	Length	Radius	T.B. Ahead	Chord Bearing
C1	N-17°52'00"W	0°36'04"	30.47(C)	2904.93'	N-18°28'04"W	N-18°10'02"W
C2	N-18°28'04"W	0°36'10"	30.79(C)	2925.93'	N-18°28'10"W	N-18°10'05"W
C3	N-18°28'04"W	1°37'50"	82.67(C)	2904.93'	N-20°05'54"W	N-19°16'53"W
C4	S-18°28'10"E	0°20'51"	17.74(C)	2925.93'	S-18°49'01"E	N-18°38'36"E
C5	S-20°05'54"E	1°37'19"	82.51(C)	2914.93'	S-18°28'01"E	S-19°16'46"E
C6	N-17°52'00"W	1°17'25"	62.60(C)	2779.93'	N-19°09'25"W	N-18°30'42"W
C7	S-19°09'25"E	1°17'25"	62.49(C)	2772.93'	S-17°52'00"E	S-18°30'42"E
C8	N-23°13'01"W	2°08'09"	111.71(C)	2779.93'	N-24°03'54"W	N-22°54'29"W
C9	N-23°13'01"W	0°43'12"	34.93(C)	2779.93'	N-23°56'13"W	N-23°34'37"W
C10	S-23°56'13"E	0°43'12"	34.85(C)	2772.93'	S-23°13'01"E	S-23°34'37"W
C11	N-17°52'00"W	1°42'25"	82.82(C)	2779.93'	N-19°34'25"W	N-18°43'12"W
C12	S-18°28'01"E	0°36'07"	30.62(C)	2914.93'	S-17°52'00"E	S-18°10'03"E
C13	S-18°49'01"E	0°20'54"	17.72(C)	2914.93'	S-18°28'07"E	S-18°38'34"E

SEC. 47, T-1-S, R-30-W

BRENTWOOD PARK  
P.B. 1, PG. 11-C

P.I. Sta. 194+60.47  
21'00" Lt.  
190.99'  
1050.00'  
2864.93'(Chord)  
Sta. 189+29.48  
Sta. 199+79.48



FLORIDA DEPARTMENT OF TRANSPORTATION RIGHT OF WAY SURVEYING AND MAPPING			
<b>RIGHT OF WAY MAP</b>			
STATE ROAD NO. 95 ESCAMBIA COUNTY			
BY	DATE	APPROVED BY	DATE
TRACED	CARTER 4-22-88	District Surveyor	ADM.
CHECKED	J. BUSH 5-24-88		
MAPS PREPARED BY 3RD DISTRICT		FIELD BOOK NOS. SEE SHEET 1	
W.P.I. NO. 3111779		SCALE 1"=50'	
SECTION 48040-2546		SHEET 4 OF 8	

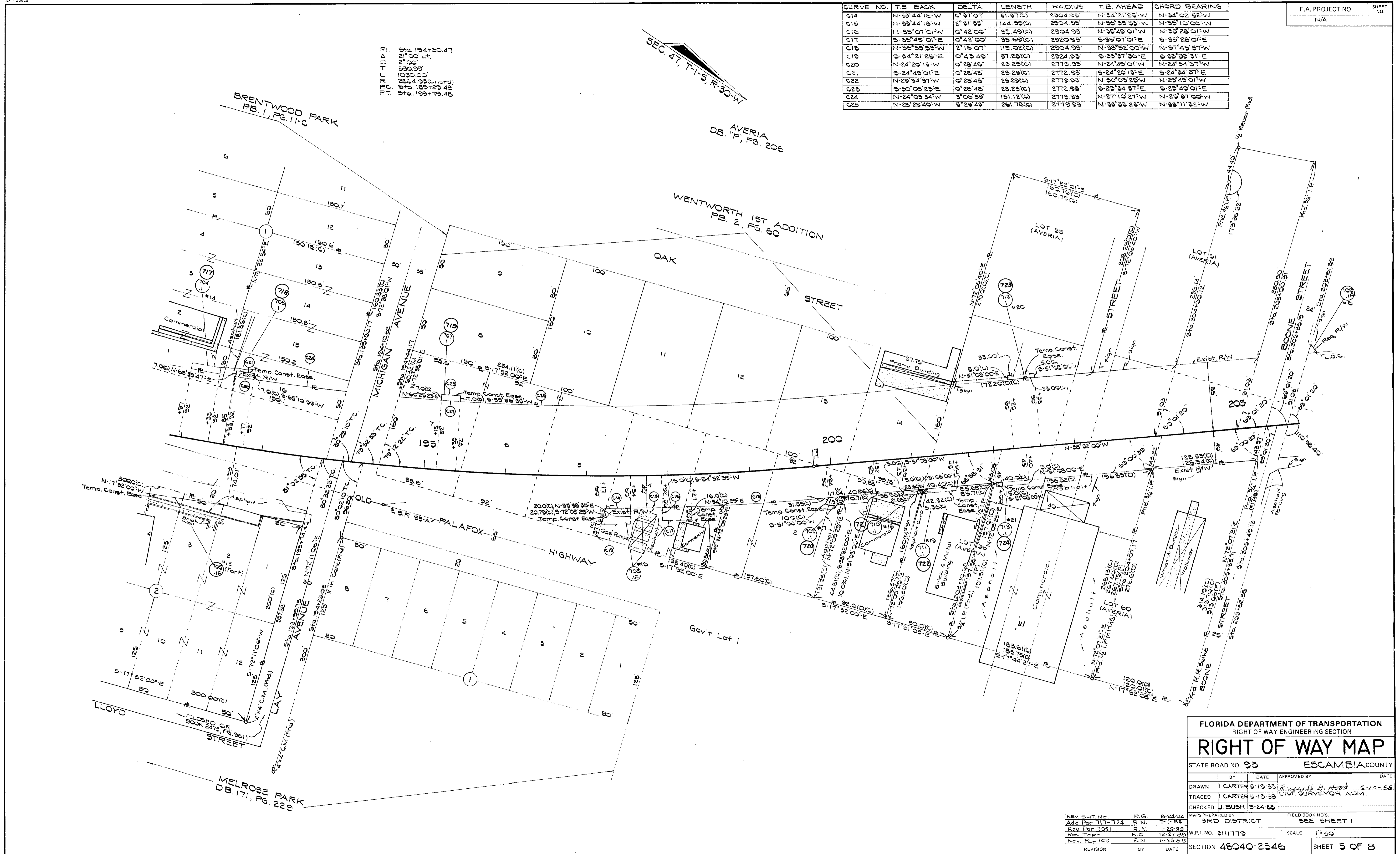
S.R. 95 (U.S. 29) FROM S.R. 296 (BRENT LANE) TO S.R. 8 (I-10)

48040 2546

CURVE NO.	T.B. BACK	DELTA	LENGTH	RADIUS	T.B. AHEAD	CHORD BEARING
C14	N-33°44'18"W	0°31'07"	31.37(C)	2304.93	N-34°21'25"W	N-34°02'52"W
C15	N-33°44'18"W	2°51'33"	144.99(C)	2304.93	N-33°55'53"W	N-33°10'06"W
C16	S-35°49'01"E	0°42'00"	35.69(C)	2304.93	S-35°01'01"E	S-35°28'01"E
C18	N-35°55'53"W	2°16'07"	118.02(C)	2304.93	N-38°52'00"W	N-37°43'57"W
C19	S-34°21'25"E	0°43'49"	37.28(C)	2324.93	S-33°57'36"E	S-33°59'31"E
C20	N-24°20'13"W	0°28'48"	23.23(C)	2779.93	N-24°49'01"W	N-24°34'37"W
C21	S-24°49'01"E	0°28'48"	23.23(C)	2772.93	S-24°20'13"E	S-24°34'37"E
C22	N-29°34'37"W	0°28'48"	23.23(C)	2779.93	N-29°09'29"W	N-29°49'01"W
C23	S-29°34'37"E	0°28'48"	23.23(C)	2772.93	S-29°09'29"E	S-29°49'01"E
C24	N-24°03'34"W	3°06'53"	151.12(C)	2779.93	N-27°10'27"W	N-29°37'00"W
C25	N-28°29'40"W	5°23'43"	261.78(C)	2779.93	N-33°53'23"W	N-33°11'32"W

F.A. PROJECT NO. SHEET NO.  
N/A

48040 2546 5



BRIDGE TO BE  
11' 0" x 194+60.47  
10' 0" x 194+60.47  
10' 0" x 194+60.47  
10' 0" x 194+60.47  
10' 0" x 194+60.47  
10' 0" x 194+60.47  
10' 0" x 194+60.47  
10' 0" x 194+60.47  
10' 0" x 194+60.47  
10' 0" x 194+60.47

SEC. 47, T-1-S, R-30-W

AVERIA  
DB. 17, PG. 206

WENTWORTH 1ST ADDITION  
PB. 2, PG. 60

FLORIDA DEPARTMENT OF TRANSPORTATION  
RIGHT OF WAY ENGINEERING SECTION

## RIGHT OF WAY MAP

STATE ROAD NO. 95 ESCAMBIA COUNTY

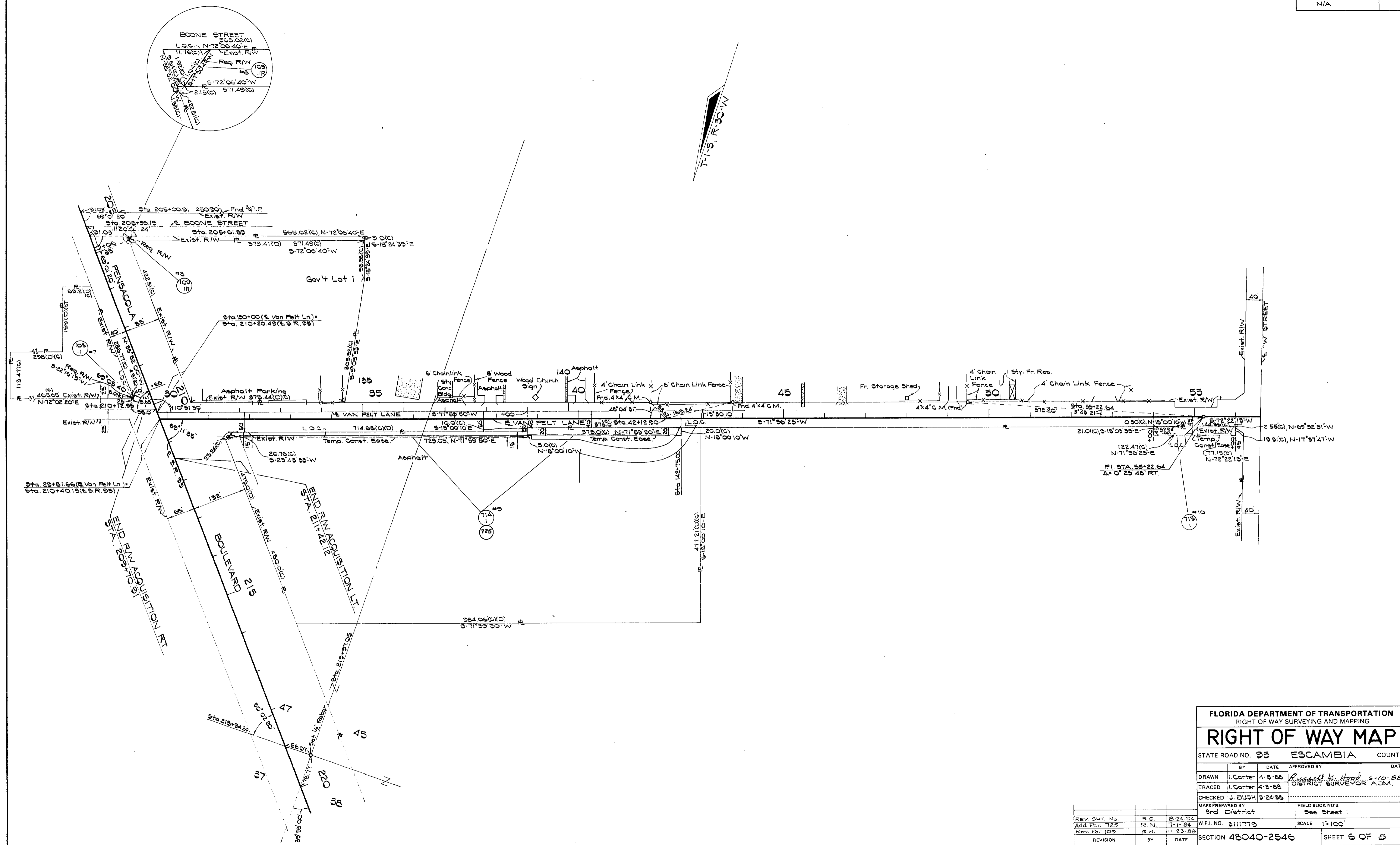
REV. SHEET NO.	REV. DATE	BY	DATE	APPROVED BY	DATE
ADD. PAR. 117-124	5-13-83	J. CARTER	5-13-83	J. CARTER	5-13-83
REV. PAR. 105.1	5-13-83	J. CARTER	5-13-83	J. CARTER	5-13-83
REV. PAR. 103	5-24-88	J. BUSH	5-24-88	J. BUSH	5-24-88

MAPS PREPARED BY: 3RD DISTRICT  
FIELD BOOK NO. 3111779  
SCALE: 1" = 50'

SECTION 48040-2546 SHEET 5 OF 8

S.R. 95 (U.S. 29) FROM BRENT LANE TO S.R. 8 (I-10)

8  
6  
2546  
48040



FLORIDA DEPARTMENT OF TRANSPORTATION RIGHT OF WAY SURVEYING AND MAPPING			
<b>RIGHT OF WAY MAP</b>			
STATE ROAD NO. 95 ESCAMBIA COUNTY			
BY	DATE	APPROVED BY	DATE
DRAWN	I. Carter 4-8-88	<i>Russell S. Hood</i>	6-10-88
TRACED	I. Carter 4-8-88	DISTRICT SURVEYOR ADM.	
CHECKED	J. BUSH 5-24-88		
MAPS PREPARED BY 3rd District		FIELD BOOK NO'S See Sheet 1	
REV. SHT. No.	R.G.	8-24-94	W.P.I. NO. 3111779
ADD. PAR. 725	R.N.	7-1-94	SCALE 1"=100'
REV. PAR. 109	R.N.	11-23-88	
REVISION	BY	DATE	SECTION 48040-2546 SHEET 6 OF 8



8  
8  
2546  
48040

TABLE OF OWNERSHIPS

F.A. PROJECT NO. N/A  
SHEET NO.

PARCEL NO.	SHEET NO.	NAME	AREA TAKEN	REMAINDERS		COMMENTS	RECORDING DATA	PARCEL NO.	SHEET NO.	NAME	AREA TAKEN	REMAINDERS		COMMENTS	RECORDING DATA
				RIGHT	LEFT							RIGHT	LEFT		
100.1R	4	KENNETH MONTGOMERY, ET AL	550 <sup>0</sup> '	4.028 Ac.	0		O.R. Book 2726, Pg. 063								
101.1R	4	KENNETH MONTGOMERY, ET AL	4675 <sup>0</sup> '	5.638 <sup>0</sup> '	0		O.R. Book 2726, Pg. 061								
102.1	4	B.P. OIL, INC.	211 <sup>0</sup> '	0	.512 Ac.		O.R. Book 2805, Page 523								
103.1R	4	BECKER ASSOCIATES, INC.	3307 <sup>0</sup> '	0	.873 Ac.		O.R. Book 2983, Page 897								
104.1	4	SUPER-LUBE 10 MINUTE OIL CHANGE, INC.	823 <sup>0</sup> '	0	.321 Ac.		O.R. Book 2714, Pg. 767								
105.1	4	ALTON H. CLINARD, ETUX	51 <sup>0</sup> '	0	10418 <sup>0</sup> '		O.R. Book 2693, Pg. 210								
105.1R	4	WILLIAM O. SALTER	880 <sup>0</sup> '	14,020 <sup>0</sup> '	0		O.R. Book 2691, Pg. 160								
107.1R	4	WILLIAM O. SALTER, ETUX	826 <sup>0</sup> '	10593 <sup>0</sup> '	0		O.R. Book 2983, Pg. 896 Pgs. 1-28-92								
108.1	6	GRACE EQUIPMENT CO.	13 <sup>0</sup> '	1.534 Ac.	0		O.R. Book 2748, Page 660								
109.1R	5,6	BLANCHE BOONE, ESTATE	62 <sup>0</sup> '	0	5114 <sup>0</sup> '		O.R. Book 2693, Pg. 212								
110.1	7	THOMAS CLINTON BOBE	2532 <sup>0</sup> '	0	0.882 Ac.		O.R. Book 3674, Pg. 842								
111.1	7	NETTIE H. BARRON	3197 <sup>0</sup> '	0	1.804 Ac.	VOID									
112.1	7	TRUSTEES OF THE CHURCH OF GOD	5452 <sup>0</sup> '	0	6.135 Ac.										
113.1	7	MARVIN LAVON HALL	44 25 <sup>0</sup> '	0	4.006 Ac.		O.R. Book 3675, Pg. 475								
114.1	7	C.R. HALL, JR., ET UX	2770 <sup>0</sup> '	0	2.513 Ac.		O.R. Book 3675, Pg. 478								
115.1	7	R. PIERRE BROWN, ET AL	3583 <sup>0</sup> '	0	0										
116.1	7	SHARON MOODY	250 <sup>0</sup> '	0	6.121 Ac.		O.R. Book 3710, Pg. 07								
700.1R	1,4	KENNETH MONTGOMERY, ET AL	459 <sup>0</sup> '	SEE PARCEL #101.1	TEMP CONST. EASE.		Executed 2-1-81								
701.1R	4	WILLIAM O. SALTER	970 <sup>0</sup> '	SEE PARCEL #106.1	"		Executed 3-1-81								
702.1R	4	WILLIAM O. SALTER, ETUX	195 <sup>0</sup> '	SEE PARCEL #107.1	"										
703.1R	4	TRUSTEES OF LEE TRUST	714 <sup>0</sup> '	0	.512 Ac.										
704.1	4,5	LOYD SIMS, INC.	244 <sup>0</sup> '	0	.641 Ac.		Executed 10-1-81								
705.1R	4,5	J. KEITH SYMONS, AS BISHOP	2022 <sup>0</sup> '	1.722 Ac.	0		Executed 10-1-81								
706.1	5	PAUL J. LAY, ETUX	163 <sup>0</sup> '	0	.592 Ac.		Executed 10-1-81								
707.1	5	H.C. KIRKPATRICK, ETUX	163 <sup>0</sup> '	0	8200 <sup>0</sup> '		Executed 10-1-81								
708.1R	5	SOUTHEASTERN ENERGY CORPORATION	1255 <sup>0</sup> '	8120 <sup>0</sup> '	0		SFJ 8-4-82								
709.1	5	GULF POWER COMPANY	151 <sup>0</sup> '	14514 <sup>0</sup> '	0		O.R. Book 2660, Pg. 143								
710.1	5	LOUIS A. PREININGER, ETAL	542 <sup>0</sup> '	13700 <sup>0</sup> '	0										
711.1	5	AQUILLA M. BLAYDES, ETUX	207 <sup>0</sup> '	14555 <sup>0</sup> '	0		Executed 1-1-81								
712.1	5	DON BARBER	165 <sup>0</sup> '	0	0.883 Ac.		Executed 1-17-81								
713.1	5	FACT-O-BAKE OF PENSACOLA, INC.	200 <sup>0</sup> '	0.981 Ac.	0		Executed 1-1-81								
714.1	1,6	RONALD H. MITCHELL, SR.	18,328 <sup>0</sup> '	11,601 Ac.	0		Executed 4-4-81								
715.1	1,6	JACK FIVEASH AS TRUSTEE	4,123 <sup>0</sup> '	55,334 Ac.	0		Executed 12-21-81								
716.1	1,4	BRENTPEN ASSOCIATES	455 <sup>0</sup> '	SEE PARCEL #101.1	"		Executed 1-1-81								
717.1	4,5	BAY ROD AND GUN, INC.	244 <sup>0</sup> '	0	0.641 Ac.										
718.1	5	C.A.G. OF PENSACOLA, INC.	163 <sup>0</sup> '	0	0.592 Ac.										
719.1	5	KIRKPATRICK INSURANCE AGENCY, INC.	163 <sup>0</sup> '	0	8200 <sup>0</sup> '		Executed 10-1-81								
720.1	5	GULF POWER COMPANY	151 <sup>0</sup> '	14514 <sup>0</sup> '	0										
721.1	5	RUBEN GONZALES	542 <sup>0</sup> '	13700 <sup>0</sup> '	0		O.R. Book 3733, Pg. 573								
722.1	5	AQUILLA M. BLAYDES, etux	207 <sup>0</sup> '	14555 <sup>0</sup> '	0		Executed 1-1-81								
723.1	5	DON BARBER, etux	165 <sup>0</sup> '	0	0.883 Ac.		Executed 1-9-81								
724.1	5	FACT-O-BAKE OF PENSACOLA, INC.	200 <sup>0</sup> '	0.981 Ac.	0										
725.1	1,6	RONALD H. MITCHELL, SR.	18,328 <sup>0</sup> '	11,601 Ac.	0		Executed 1-1-81								
726.1	7	BURLINGTON NORTHERN RAILROAD COMPANY	400 <sup>0</sup> '	---	---		VOID (SEE # 1)								
727.1	7	JOHNNIE D. EDDIS	594 <sup>0</sup> '	---	---										
800.1	7	BURLINGTON NORTHERN RAILROAD COMPANY	2201 <sup>0</sup> '	---	---		PERPETUAL EASEMENT								VOID (SEE # 1)
801	7	NETTIE H. BARRON	3197 <sup>0</sup> '	0	1.877 Ac.										
1	7	BURLINGTON NORTHERN RAILROAD COMPANY	---	---	---		AGREEMENT								

**LEGEND**

PARCEL NUMBER IDENTIFICATION	TYPE USE
100-699	DEEDS OF ALL TYPES
700-799	TEMPORARY EASEMENTS
800-899	PERMANENT EASEMENTS
R.A.	RESTORATION AGREEMENT

FLORIDA DEPARTMENT OF TRANSPORTATION  
RIGHT OF WAY SURVEYING AND MAPPING

**RIGHT OF WAY MAP**

STATE ROAD NO. 95 ESCAMBIA COUNTY

NAME CHANGE 727	R.M.	12-06-94
ADD PAR 716, 726, 727	R.M.	10-06-94
NAME CHANGE 1010	R.G.	9-2-94
REV. PAR 1015, 800	R.G.	8-24-94
REV. EMT. No.	R.M.	7-29-94
NAME CHANGE 718	R.M.	7-27-94
NAME CHANGE 717	R.M.	7-18-94
NAME CHANGE 716	R.G.	7-6-94
ADD PAR. 716-725	J.M.G.	6-23-90
PAR 103, 105, 108	T.C.	5-23-90
NAME CHANGE PAR 101, 102	R.G.	5-23-90
PAR 100, 101	R.G.	3-30-89
REV. PAR. 109, 107, 101, 702	R.N.	1-26-89
REV. PAR. 705.1	R.N.	1-25-89
REV. PAR. 1001, 1001, 1001	J.B.	1-20-89
REV. PAR. 100.1R	R.N.	12-12-88
REV. PAR. 103.1	R.N.	11-23-88
REV. PAR. 703.1	R.G.	10-18-88
REV. PAR. 100.1	M.L.S.	10-17-88

W.P.I. NO. 3111779 SCALE: N/A

SECTION 48040-2546 SHEET 8 OF 8